

7/16 F/F Bulkhead Coaxial RF Surge Protector, 698MHz - 2.7GHz, 1000W, IP67, 60 V Max., 25mJ, 20kA, Filter, Low PIM -155 dBc



## TSXDC-DFF

### Features

- Surge current of 20kA
- Max Power 1000W
- Frequency range from 698 MHz to 2.7 GHz
- Waterproof IP67 rated
- 7/16 DIN female connectors
- DC Pass
- Low PIM
- VSWR <1.2:1
- Low insertion loss
- CE & RoHS compliant

### Applications

- Cellular communication systems
- Public safety systems
- Emergency response systems
- Industrial

### Description

RF surge protector (also known as lightning arrester) TSXDC-DFF from PolyPhaser utilizing a patented spiral inductor design enables an almost instantaneous response to a lightning surge to protect critical hardware while maintaining the RF performance. This RF surge protector component is manufactured in a coaxial in-line design with wide operating frequency range. All PolyPhaser RF surge protector products are available in stock with same day shipping.

### Electrical Specifications

Description	Surge Protector Type DC Handling		Surge Filter DC Pass		Units
	Minimum	Typical	Maximum		
Frequency Range	0.698		2.7		GHz
Impedance		50			Ohms
VSWR			1.2:1		
Insertion Loss			0.1		dB
Passive Intermodulation		-125	-155		dBc
Operating Voltage (DC)			60		Volts
Operating Current (DC)			6		A
Resistance (DC)			20		mOhms
Input Power, CW @ 920 MHz			1		kWatts
Surge Current IEC 61000-4-5 8/20µs WAVEFORM			20		kA
Throughput Voltage			500		Volts

Click the following link (or enter part number in "SEARCH" on website) to obtain additional part information including price, inventory and certifications:  
[7/16 F/F Bulkhead Coaxial RF Surge Protector, 698MHz - 2.7GHz, 1000W, IP67, 60 V Max., 25mJ, 20kA, Filter, Low PIM -155 dBc TSXDC-DFF](#)

7/16 F/F Bulkhead Coaxial RF Surge Protector, 698MHz - 2.7GHz,  
1000W, IP67, 60 V Max., 25mJ, 20kA, Filter, Low PIM -155 dBc



## TSXDC-DFF

<500V 2kA IEC 61000-4-5 8/20µs WAVEFORM

Throughput Energy FOR 2kA IEC 61000-4-5 8/20µs WAVEFORM	25	mJ
--	----	----

## Mechanical Specifications

### Size

Length	3.5 in [88.9 mm]
Width/Diameter	1.73 in [43.94 mm]
Height	1.94 in [49.28 mm]

### Configuration

Input Connector	7/16 DIN Female
Output Connector	7/16 DIN Female

## Environmental Specifications

### Temperature

Operating Range	-50 to 85 deg C
-----------------	-----------------

Ingress Protection (IP) Rating

IP67

Humidity

95%, Non-condensing, 100% External

## Compliance Certifications (see [product page](#) for current document)

## Plotted and Other Data

Notes:

Click the following link (or enter part number in "SEARCH" on website) to obtain additional part information including price, inventory and certifications:  
[7/16 F/F Bulkhead Coaxial RF Surge Protector, 698MHz - 2.7GHz, 1000W, IP67, 60 V Max., 25mJ, 20kA, Filter, Low PIM -155 dBc TSXDC-DFF](#)

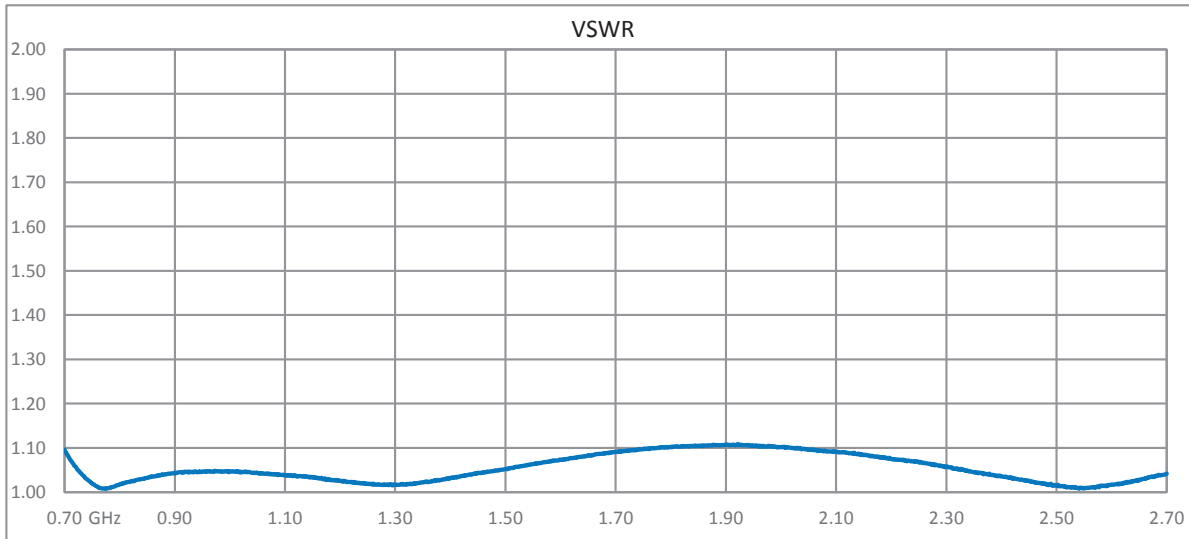


7/16 F/F Bulkhead Coaxial RF Surge Protector, 698MHz - 2.7GHz,  
1000W, IP67, 60 V Max., 25mJ, 20kA, Filter, Low PIM -155 dBc



## TSXDC-DFF

### Typical Performance Data

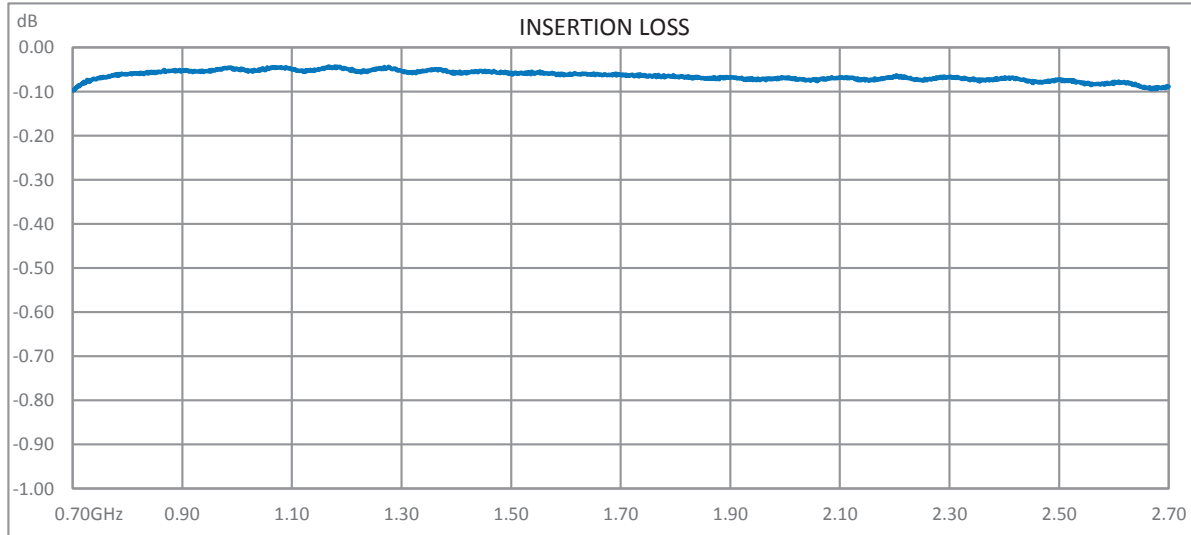


Click the following link (or enter part number in "SEARCH" on website) to obtain additional part information including price, inventory and certifications:  
[7/16 F/F Bulkhead Coaxial RF Surge Protector, 698MHz - 2.7GHz, 1000W, IP67, 60 V Max., 25mJ, 20kA, Filter, Low PIM -155 dBc TSXDC-DFF](#)

7/16 F/F Bulkhead Coaxial RF Surge Protector, 698MHz - 2.7GHz,  
1000W, IP67, 60 V Max., 25mJ, 20kA, Filter, Low PIM -155 dBc



## TSXDC-DFF



PolyPhaser protects and increases the reliability of global RF communications networks, including transportation, telecommunications, defense, security and industrial applications, with superior RF surge protection technologies including DC Block, DC Pass and Ultra Low PIM. Backed by responsive service and expert technical support PolyPhaser continually expands its product offering and services to serve engineers' urgent needs for RF components in mission critical communication networks.

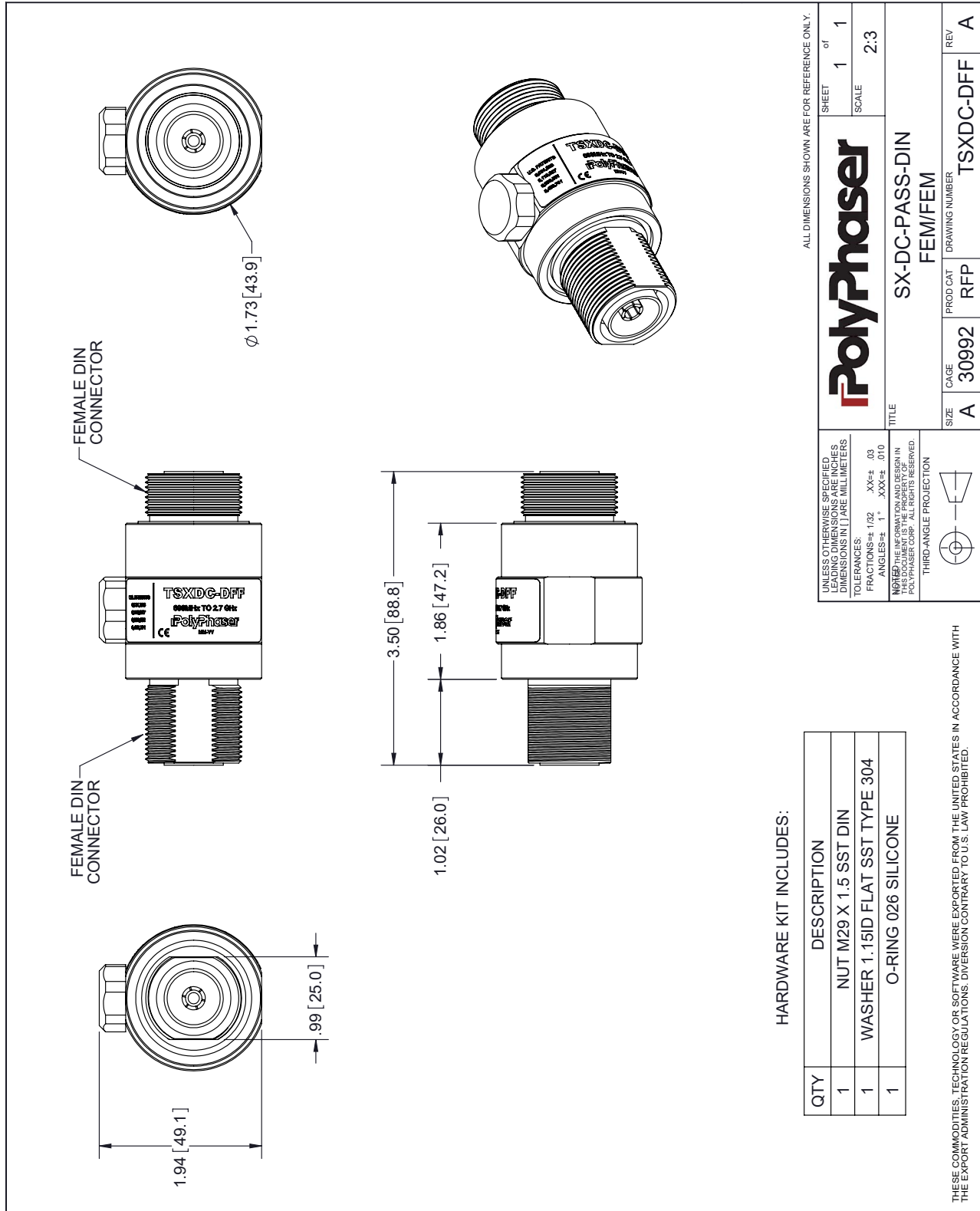
Click the following link (or enter part number in "SEARCH" on website) to obtain additional part information including price, inventory and certifications: [7/16 F/F Bulkhead Coaxial RF Surge Protector, 698MHz - 2.7GHz, 1000W, IP67, 60 V Max., 25mJ, 20kA, Filter, Low PIM -155 dBc TSXDC-DFF](https://www.polyphaser.com/7-16-din-surge-protector-2.7ghz-filter-tsxdc-dff)

URL: <https://www.polyphaser.com/7-16-din-surge-protector-2.7ghz-filter-tsxdc-dff>

The information contained in this document is accurate to the best of our knowledge and representative of the part described herein. It may be necessary to make modifications to the part and/or the documentation of the part, in order to implement improvements. PolyPhaser reserves the right to make such changes as required. Unless otherwise stated, all specifications are nominal. PolyPhaser does not make any representation or warranty regarding the suitability of the part described herein for any particular purpose, and PolyPhaser does not assume any liability arising out of the use of any part or documentation.

7/16 F/F Bulkhead Coaxial RF Surge Protector, 698MHz - 2.7GHz, 1000W,  
 IP67, 60 V Max., 25mJ, 20kA, Filter, Low PIM -155 dBc

**TSXDC-DFF CAD Drawing**



**HARDWARE KIT INCLUDES:**

QTY	DESCRIPTION
1	NUT M29 X 1.5 SST DIN
1	WASHER 1.15ID FLAT SST TYPE 304
1	O-RING 026 SILICONE

THESE COMMODITIES, TECHNOLOGY OR SOFTWARE WERE EXPORTED FROM THE UNITED STATES IN ACCORDANCE WITH THE EXPORT ADMINISTRATION REGULATIONS. DIVERSION CONTRARY TO U.S. LAW PROHIBITED.

ALL DIMENSIONS SHOWN ARE FOR REFERENCE ONLY.

<p>UNLESS OTHERWISE SPECIFIED          LEADING DIMENSIONS ARE INCHES          DIMENSIONS IN [ ] ARE MILLIMETERS</p> <p>TOLERANCES:          FRACTIONS: ± 1/32 .XXF± .03          ANGLES: ± 1° .XXX± .010</p> <p>NOTE: THE INFORMATION AND DESIGN IN THIS DRAWING IS THE PROPERTY OF POLYPHASER CORP. ALL RIGHTS RESERVED.</p> <p>THIRD-ANGLE PROJECTION</p>	<p><b>PolyPhaser</b></p> <p>SX-DC-PASS-DIN          FEM/FEM</p>	<p>SHEET 1 of 1</p> <p>SCALE 2:3</p>
	<p>TITLE</p> <p>SIZE A</p> <p>CAGE 30992</p> <p>PROD CAT RFP</p> <p>DRAWING NUMBER TSXDC-DFF</p>	<p>REV A</p>