



ISO 9001 Certified

### *LP-GTV-S Series*

- *DC Pass Multi-Strike Design*
- *Broadband Bidirectional Design*
- *Excellent IL/RL Performance Over the Entire Operating Frequency Band*
- *Fully Weatherized Housing*
- *White Bronze Plated for Durability and Long Life*



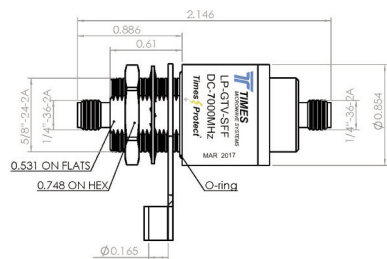
### *Lightning and Surge Protection for The 21st Century™*

The **Times-Protect®** LP-GTV-S series is an exceptional broadband DC pass design for lightning protection applications requiring DC power to be supplied to the electronics. These devices exhibit outstanding RF performance with high surge current handling characteristics and cover a broad range of applications requiring up to 150W of RF power handling. Its fully weatherized housing meeting IP67 standard allows for outdoor as well as indoor installation. The SMA connector designs cover the entire frequency spectrum from DC through 7000MHz.

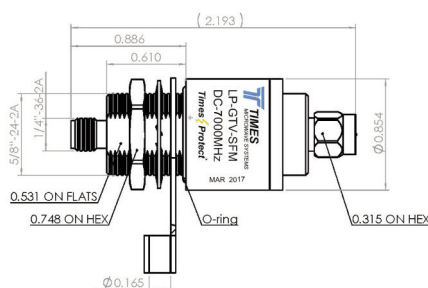
#### LP-GTV-S Series:

- LP-GTV-SFF (150W)  
SMA Female connectors on both sides - bidirectional
- LP-GTV-SFM (150W)  
SMA Male connector on one side & SMA Female connector on the other side - bidirectional

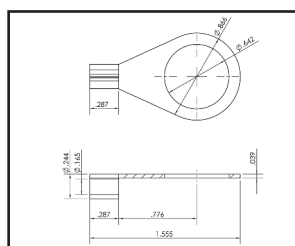




- LP-GTV-SFF  
DC Pass SMA Type F/F

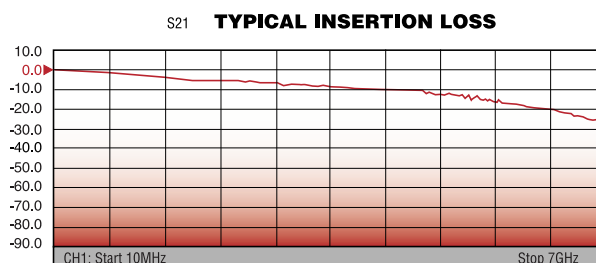
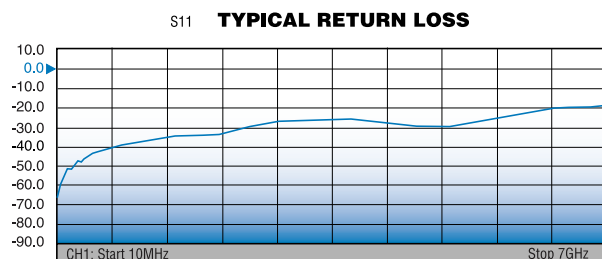


- LP-GTV-SFM  
DC Pass SMA Type F/M



- Grounding Ring

\*All Dimensions shown in inches



## Electrical Specifications

Impedance	50 $\Omega$
Frequency Range	DC-7000 MHz
VSWR/Return Loss	< 1.2:1 / < -20dB (DC-6700MHz) < 1.3:1 / < -17dB (6700-7000MHz)
Insertion Loss	< 0.2dB (DC-6700MHz) < 0.3dB (6700-7000Mhz)
Maximum Surge Current	10kA multiple (8x20 $\mu$ s wave-form)
Impulse Sparkover	700V (1kV/ $\mu$ s)
Turn on	180Vdc
Average Power	150 Watts
Protection Circuit	DC Pass

## Mechanical / Environmental Specifications

Temp Range Storage/Operating	-40°C - +85°C
Weatherization	IEC 60068 40/085/21 & IP67
Thermal Shock	US MIL-STD 202, Meth.107,Cond.B
Vibration	US MIL-STD 202, Meth.204,Cond.B
Shock	US MIL-STD 202, Meth.213,Cond.I
RoHS Compliant	Yes
Wear/Mating Cycles	500 minimum
Recommended Coupling Nut Torque	3 to 5 lb-in
Unit Weight	1.41 oz / 40 grams

## Material Specifications

Component	Material	Plating
Body	Brass	White Bronze
Inner Conductor Male	Brass	Silver
Inner Conductor	Phosphor Bronze	Silver
Washer	Brass	White Bronze
Coupling Nut	Brass	White Bronze
Insulator	PTFE	--
O-Ring	Silicone Rubber	--



World Headquarters: 358 Hall Avenue, Wallingford, CT 06492 • Tel: 203-949-8400, 1-800-867-2629 • Fax: 203-949-8423

International Sales: +1 (203) 949-8503 • +1 (203) 213-3506

China Sales: No. 318 Yuan Shan Road, Shanghai 201108 China • Tel: 86-21-51761234 • Fax: 86-21-64424098

www.timesmicrowave.com

LP-GTVS 11/18