

**SURGE PROTECTION FOR  
DANGER DETECTION SYSTEM**



## HIGHEST LEVEL OF AVAILABILITY IN SECURITY SYSTEMS

Today, complex security systems consist more and more of sensitive electronics. Therefore, it is necessary to include these security systems when considering a lightning and surge protection concept.

Especially, an outage of security installations which are installed at sensitive locations in commerce, industry and private sectors may cause high costs and subsequent damage.

According to insurance associations, lightning strikes and surges are one of the most frequent causes for the breakdown of high quality electro-technical equipment and, thus, resulting in subsequent damage.

As a specialist for fire alarm systems, burglar alarm systems, video surveillance systems or danger detection systems you are the direct contact

person for the operator and can assess the weak spots on-site.

Benefit from Leutron's years of experience in the area of internal lightning and surge protection. Our products which are manufactured in Germany constantly prove their reliability through sophisticated technology.

Figure 1 depicts the interfaces of security installations which should be integrated into the security concept according to DIN VDE 0185305 and VdS guidelines.

### Advantages of Leutron's lightning and surge protection components in building technology

- Consistent overall concept
- Increased reliability
- Undisturbed operation of IT systems and safety equipment
- Fewer false alarms
- Protection modules of the MP series can be removed and changed without interfering with other signals
- Versions for two pair of wires (2DA) with four signal lines available
- Space-saving installation of the MP series
- Surges and overvoltages are limited to non-hazardous values (low protection level)

## PRODUCT SELECTION\*

Products on power side (230 V)	Item No.	IEC test class/ EN Type	
PP BC TNS 25/100/FM	37 39 52	Type 1+2 / class I + II	4-pole, with signal remote contact
EP C TN 275/FM	38 12 48	Type 2 / class II	2-pole, with signal remote contact
Products on signal side	Item No.	IEC test class/ EN Type	Protected wires
MP 2x2 GDT+12V-Ad-Pg ST *1 *2	97 00 26	D1/C2/C1/C3	2 DA
MP 2x2 GDT+24V-Ad-Pg ST *1 *2	97 00 27	D1/C2/C1/C3	2 DA
MP 2x2 GDT+5V-Ad-Ad-Pg ST *1 *2	97 00 39	D1/C2/C1/C3	2 DA
MP 2x2 GDT+12V-Ad-Ad-Pg ST *1 *2	97 00 40	D1/C2/C1/C3	2 DA
MP 2x2 GDT+24V-Ad-Ad-Pg ST *1 *2	97 00 41	D1/C2/C1/C3	2 DA
MP 2x2 GDT+36V-Ad-Ad-Pg ST *1 *2	97 00 42	D1/C2/C1/C3	2 DA
MP 2x2 GDT+48V-Ad-Ad-Pg ST *1 *2	97 00 43	D1/C2/C1/C3	2 DA
MP 2x2 GDT+60V-Ad-Ad-Pg ST *1 *2	97 00 44	D1/C2/C1/C3	2 DA
MP 2x2 GDT+180V-Ad-Ad-Pg ST *1 *2	97 00 45	D1/C2/C1/C3	2 DA
MP 2x2 24V-HF ST *3 *4	97 10 51	D1/C2/C1/C3	2 DA
MP 2x2 GDT+60V-Ad-Ad ST *1 *2	97 00 16	D1/C2/C1/C3	2 DA
DataPro Koax-8V-BNC-75 Ohm	54 43 40	D1/C2/C1/C3	
DP RJ45-CAT6-48V-Tr	24 00 05	C2/C1/C3	8 signal wires
DP 8xRJ45-6V-WG	19 40 50	C2/C1/C3	8 signal wires
DP 1xRJ45-PoE-Alu	24 00 21	C2/C1/C3	8 signal wires
DP 3x8RJ45-19"	19 40 33	C2/C1/C3	24 x 8 wires
*1 MP Base 2x2 Base-R (accessory)	97 00 00	-	Plug base with direct grounding
*2 MP Base 2x2 Base-R GDT (accessory)	97 00 01	-	Plug base with indirect grounding
*3 MP Base 2x2 (accessory)	97 00 03	-	Plug base with direct grounding
*4 MP Base 2x2 GDT (accessory)	97 00 04	-	Plug base with indirect grounding

\* Please consult Leutron's product catalogue for detailed information.  
We would be pleased to advise you.

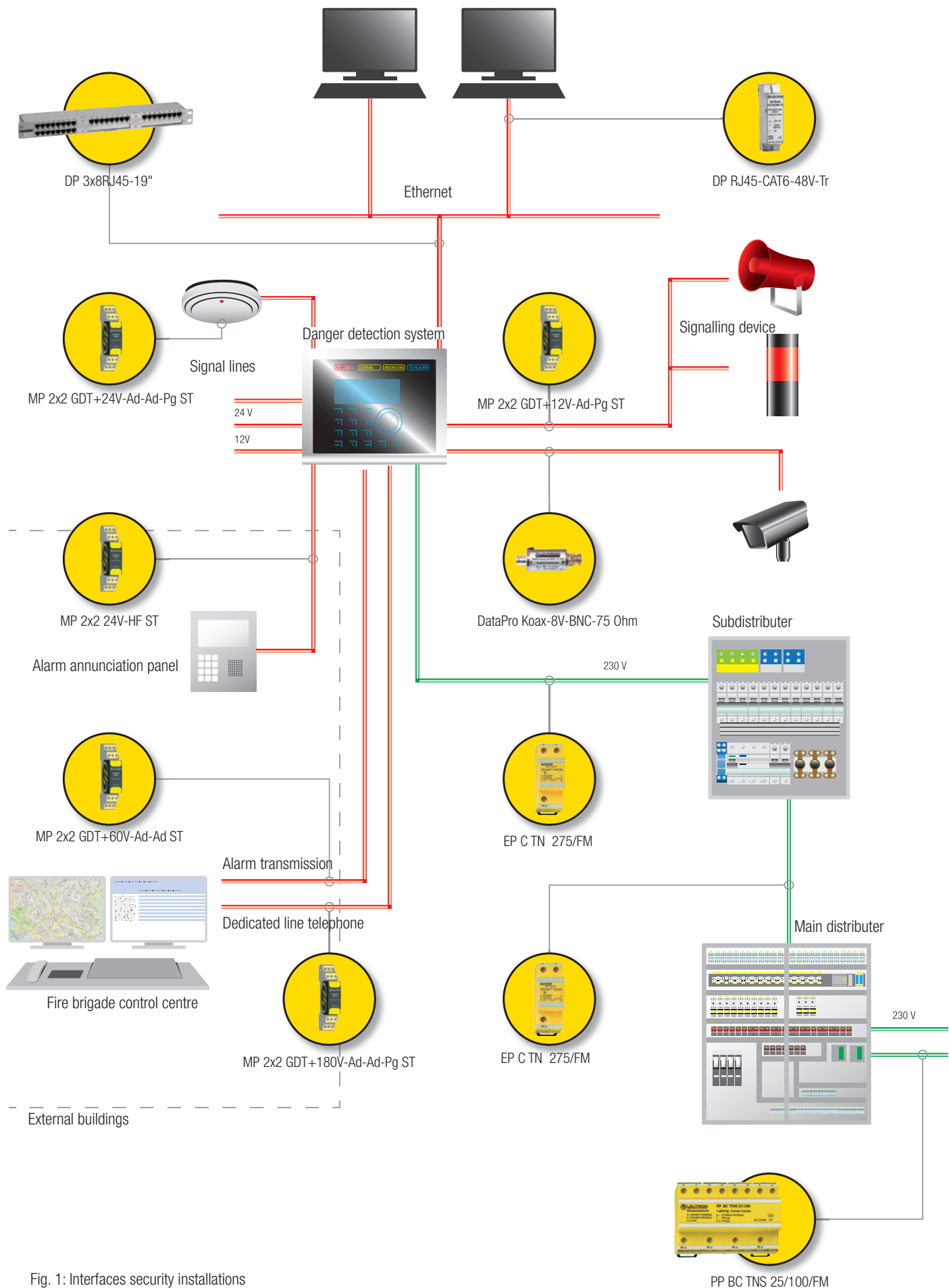


Fig. 1: Interfaces security installations



**LEUTRON GMBH**

**LIGHTNING AND SURGE PROTECTION**

**HUMBOLDTSTRASSE 30/32**

**D-70771 LEINFELDEN-ECHTERDINGEN**

**P: +49-(0)711-94771-0**

**F: +49-(0)711-94771-70**

**INFO@LEUTRON.DE**

**WWW.LEUTRON.DE**

We reserve the right to make alterations in style and form in line with technical development.  
The illustrations are non-binding. We do not assume liability for mistakes or printing errors.  
All orders will only be accepted in General Terms and Conditions of Sale of the  
Company of Leutron GmbH.

© Leutron GmbH, GMA\_EN 11/2013. P/N: 98 01 59

**WWW.LEUTRON.DE**